

Met Gala Press Notifications  
Emefa Cole and SMO

Fashion > Celebrity Style

# Michaela Coel Wows In Custom Beaded Schiaparelli Couture Gown At The 2023 Met Gala

*Styled by ELLE's own Georgia Medley.*



BY NATASHA BIRD

PUBLISHED: 02 MAY 2023



Sustainability was of utmost importance to Coel on the night. Before the Gala she enlisted the help of fellow Ghanian, jewellery artist Emefa Cole, to create a headpiece made of Single Mine Origin (SMO) gold, responsibly sourced from West Africa. The piece's design was based on a coral branch and created using small nuggets of SMO Gold. Cole also designed and created Coel's earrings and cocktail rings which were hand textured to look like 'silky liquid gold', according to a press release. The pieces form part of Cole's *Worth Their Weight* collection, and have their own QR code to provide more detail about the jewellery's 'journey', from mine to Met.

---

The actor said of the designs: 'There is a great synergy between Daniel Roseberry and Emefa Cole's designs, I feel timeless in her work. here is no greater feeling to know that your choices can impact women in Africa like we've done with this collaboration.'

Coel is still a relative newcomer for the Met Gala night, with her Met Gala debut only a few years ago in 2021, at which she wore an incredible blue, sequined catsuit by Balenciaga.

# Met Gala 2023: the 16 most glamorous dresses

These are the most extravagant looks from this year's ball

UPDATED ON 02 MAY 2023, 14:13 BST

## Michaela Coel



© Mike Coppola

Michaela Coel looked exquisite in an embellished custom Schiaparelli ensemble, topped off with statement jewels by Emefa Cole in SMO Gold, (the first transparent and traceable gold)

[Style](#) > [Fashion](#)

# The Best Jewelry at the Met Gala 2023

A-Listers are pulling all the stops in head-turning gems for fashion's biggest night out.



BY [SOPHIE DWECK](#) PUBLISHED: MAY 2, 2023

SAVE ARTICLE

Here, a closer look at the biggest, boldest, and best jewelry moments on the Met Gala 2023 red carpet.



DIMITRIOS KAMBOURIS // GETTY IMAGES

## Michaela Cole

In a bejeweled gown made of 130,000 crystals and over 26,000 stones and custom jewelry that was responsibly sourced in West Africa and designed by African designer Emefa Cole SMO Gold.

MET GALA 2023

## Why Michaela Coel Is Dripping in Ethical Gold At This Year's Met Gala

2 May 2023

As soon as [Michaela Coel](#) was invited to host this year's [Met Gala](#), she knew she wanted her red-carpet jewelry to embody the [Karl Lagerfeld](#) theme, but also to stay true to herself and her ethics. The solution came in the form of an epically-proportioned set of jewels realised in responsibly-sourced, fully traceable gold. Custom-designed and created by London jeweller [Emefa Cole](#), they not only pay homage to Lagerfeld's bold gold Chanel creations from the '80s, they also happen to be the perfect match for Coel's equally dramatic golden [Schiaparelli](#) gown.



Jamie McCarthy/Getty Images

Like Coel, Cole is of Ghanaian heritage. The actor and screenwriter first fell in love with her work when she wore one of her powerful looking sculptural rings last year. "I found her designs absolutely stunning and felt like each piece was trying to convey its own unique story," Coel explains.

The fact that Cole uses [Single Mine Origin gold](#) that can be fully traced to the Endeavour Ity mine in the Cote d'Ivoire, along the same coastline as Ghana, made it the perfect way to celebrate both of their origins in this historically resource-rich region. "Not only is Emefa Ghanaian like myself, but the SMO gold used can be fully traced to West Africa," says Coel. "It was really important for me to try and work with as many ethical and/or sustainable companies as I could, and to approach gold with mindfulness towards both people *and* planet."



Emefa Cole's coral branch headpiece in SMO gold

For Cole, the "aha" moment in the design process came when Coel's stylist Georgia Medley mentioned that Coel wanted to walk the red carpet "dripping in gold". She immediately started sketching designs that fit the bill, sculpting them in wax before casting them in precious metal. First up was a dramatic headpiece, designed like a giant coral branch that is strewn with SMO gold nuggets. Given the tight time frame she had to work with, it was created in collaboration with her studio neighbour and fellow jeweller [Benjamin Hawkins](#). "I just knew I could trust him completely to be able to bring to life what I had in mind," says Cole.



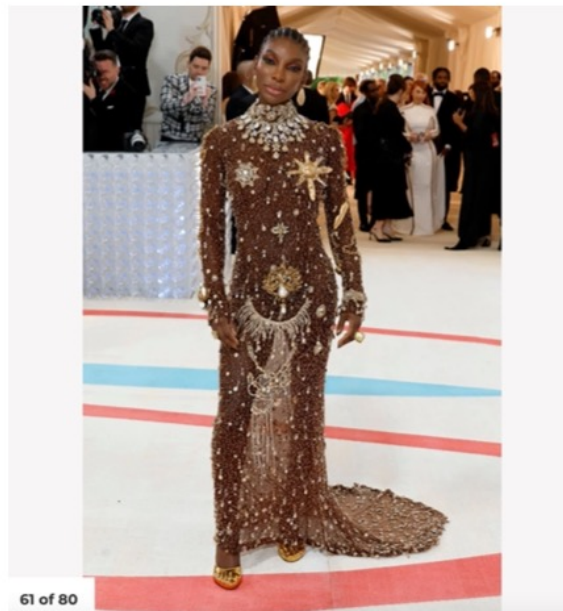
Coel's earrings were hand-textured by Cole to look like molten gold.

The organic, nubby texture of the headpiece contrasts with Coel's giant rings and earrings, the latter hand-textured by Cole to look silkily liquid, like molten gold, a return to the idea that the co-host should quite literally be dripping in gold. "The end result is amazing, Michaela looks like a goddess," says Cole. Medley, who says her and Coel's choices for the Met Gala were inspired by Lagerfeld's '80s gold creations for Chanel as well as his own eponymous line, agrees. "I think Karl would have been in awe. Michaela's look is an ode to his designs of the period, and she looks incredible with her natural beauty embellished in gold."

For Coel, it's been an emotionally rewarding experience from start to finish. I saw a video of the women from one of the many social projects at the Ity mine, in the land of my parents' birth, singing praises of happiness because we were collaborating with them and providing opportunities for them to work," she says. "There is no greater feeling to know that your choices can impact women on the continent like we've done with this collaboration." Now that's a red-carpet story worth telling.



## The Met Gala 2023: All Of The Best Celebrity Looks On The Red Carpet



### Michaela Coel wearing Schiaparelli Haute Couture

Michaela wore custom-made jewellery by Emefa Cole, who only had one month to complete the pieces before the Met Gala. Michaela's brief? She wanted to be 'dripped in gold'. The SMO Gold (Single Mine Origin Responsibly Sourced Gold) in question came from West Africa - specifically the Ity Mine, Côte d'Ivoire - which was important to them both. 'This subject is very important to us both firstly because of our shared West African heritage,' Cole told *Grazia*. 'Anyone of West African heritage has an intrinsic link to gold, it is a huge part of community and culture, and so it was incredibly important to ensure the gold used in this collection left a positive legacy for both the environment and the community that would last well after the moment of the Met Gala.'

BEAUTY | CELEBRITY | FASHION | 2023 MET GALA



By Colleen Kratofil

## ALL THE BEST LOOKS AT THE 2023 MET GALA

*It's the most glamorous night of the year!*

**Michaela Coel in Schiaparelli Haute Couture and Emefa Cole SMO Gold jewelry**



NEW YORK, NEW YORK – MAY 01: Michaela Coel attends The 2023 Met Gala Celebrating "Karl Lagerfeld: A Line Of Beauty" at The Metropolitan Museum of Art on May 01, 2023 in New York City. (Photo by Jamie McCarthy/Getty Images)

RED CARPET — MAY 2, 2023

# The Most Jaw-Dropping Red Carpet Looks From the 2023 Met Gala

by KRISTEN NICHOLS



PHOTO: GETTY IMAGES/THEO WARGO

**WHO:** Michaela Coel

**WEAR:** Schiaparelli Couture; Emefa Cole and SMO Gold jewellery



Fashion > Jewellery & Watches

## From mine to Met Gala: The story behind Michaela Coel's Ghanaian gold

Challenged to create a suite of jewels for the co-host of this year's event, Ghanaian-British designer Emefa Cole chose fully traceable single mine origin gold to celebrate their shared heritage

By CHARLIE BOYD / PUBLISHED: 03 MAY 2023

As a co-host for this year's [Met Gala](#), the BAFTA-winning actor, director and screenwriter Michaela Coel had jewellery maisons queuing around the block to drape her in their creations. While [Priyanka Chopra](#) and [Dua Lipa](#) wore diamonds by Bulgari and Tiffany worth many millions, Coel, who has previously celebrated her Ghanaian-British heritage through her fashion choices on the red carpet, opted for a suite of gold jewellery crafted especially for her by Emefa Cole – an independent Ghanaian-British designer known for her boldly scaled, geology-inspired designs.

Wearing custom Schiaparelli haute couture shimmering with more than 135,000 crystal beads, the *Black Panther: Wakanda Forever* star wore four pieces by Cole, each crafted from single mine origin (SMO) gold originating from Ghana. “I’m a small studio practitioner,” Cole says of her business, which she runs from a compact one-person studio in London’s Goldsmith’s Centre. “Usually, these opportunities go to very big jewellery houses with huge budgets, so it was really special for Michaela to choose me. What makers like me are doing really comes from the soul; these pieces come from the deepest part of me and it’s rare to find deeply soulful jewellery on the red carpet. It’s a really powerful thing.”

Cole isn't, however, without her own accolades. With works acquired by the Victoria & Albert Museum and the Goldsmith's Company Collection, her designs have also featured in *Vogue*, *Vanity Fair* and the *International New York Times*. This collaboration wasn't just a celebration of the duo's shared heritage though – it offered an important platform to promote responsible sourcing within the jewellery-making industry. "I knew I'd need a gold partner," says Emefa, who hand-carves her pieces from wax before casting them into sculptural, body-intuitive shapes. "I was already working with West African gold sourced by SMO, so it was a natural fit," she explains.



*Michaela's Emefa Cole earrings*

COURTESY OF EMEFA COLE

SMO gold was founded by Betts Metals in 2018, with a simple yet important mission: to produce gold entirely segregated from other metals throughout the supply chain, to ensure that it is fully traceable and responsibly sourced. By way of a QR code, jewellers and shoppers can find out where every ounce of their gold was mined and who mined it, as well as track the positive social and environmental projects carried out by SMO within the local mining community. For Cole's designs, the gold was mined from the Endeavour Ity Mine, based on the Côte D'Ivoire. "I value truth over everything. Being transparent has always been part of my nature, and I always think about where things come from and the people involved," explains Cole. "My spirit is at ease knowing I'm using something fully traceable."

With these resources at her fingertips, Cole was able to focus on the design of each piece. “I was told that Michaela wanted to be dripping in gold,” says Cole. “And I thought: I can do that. I can drip her in gold. I can make her look like a goddess.” The designer used a remarkable 2kg of the precious metal to create the pieces worn by Coel, which will become part of a wider collection titled ‘Worth Their Weight’. “I had gold dust everywhere – on my skin, in my hair, I was like a golden fairy,” she says, laughing. “It made me think about when the British first arrived in Ghana, then called the Gold Coast, and the historical accounts of British men discovering women covered in gold – in our culture it’s natural to be dripped in gold from head to toe.” The showstopping piece? Coel’s headdress, which required each gold nugget to be meticulously thought-out and placed by hand onto a wire construction. “Jewellery in Ghana, whether it’s beads or gemstones or gold, it all has meaning – it is never adornment for adornment’s sake. You can have an entire conversation based on what you’re wearing without saying a word,” she explains.

Humbled by her designs being worn to the Met Gala, Cole is nonetheless confident in her ability to take her artistry to the next level; to industry insiders, it is wholly unsurprising that her works have ended up alongside those of major maisons. With a side hustle as a jewellery curator at the V&A focused on diaspora, and about to embark on a prestigious apprenticeship to the official goldsmith of the Asantahene, the King of the Ashanti people of West Africa, Cole is moving onto even greater things with her craft. “I have a fighting spirit; nobody can tell me no,” she tells me. “I don’t personally allow anyone to restrict me from doing what I want to do, I go with confidence, and I get it done. That spirit has been in me since childhood. It’s not easy, but my advice is to just be fearless, just drop the fear and go for it – eventually it will feel natural.”

EVENTS & AWARDS • MAY 03, 2023

## From Mine to Met: Event Co-Chair Gives Platform to Responsibly Sourced Gold

Actress Michaela Coel was “dripping in gold” at the Met Gala, wearing jewelry handmade by fellow British-Ghanaian artist Emefa Cole.

 Lauren McLemore  
lauren.mclemore@nationaljeweler.com

New York—London-based jewelry artist [Emefa Cole](#), together with Single Mine Origin (SMO), created gold jewelry for award-winning actress Michaela Coel to wear as co-chair of the Met Gala.

Coel was the star, writer and co-director of the 2020 BBC One and HBO limited series “I May Destroy You.” In 2021, she won the Emmy for Outstanding Writing for a Limited Anthology Series or Movie, the first Black woman to do so.

Arriving at the Met on Monday night, Coel wore a handmade coral-esque headpiece clipped into her hair near the nape of her neck, a pair of bold gold statement earrings and two cocktail rings, hand textured to look like silky liquid gold.



Actress Michaela Coel wore a pair of handmade earrings by British-Ghanaian designer and maker Emefa Cole at the Met Gala Monday. Coel specifically requested the designer, along with Single Mine Origin gold, to style her for the night. (Photo courtesy of Emefa Cole)

When the actress approached Cole to inquire about styling her for the event, her wish was to be “dripping in gold.”

The pieces couldn’t be just any gold, though; it had to be SMO gold responsibly sourced from West Africa, the land of both their parents’ birth.

Because the two share a British-Ghanaian heritage, Cole said sourcing the gold from Endeavor Mining’s Ity mine on the Ivory Coast in West Africa, “really ties [Coel and I] together completely.”

As a designer, Cole’s process always has included recycled metals and stones sourced from Africa, inspired by her homeland.

After being connected with SMO in 2020, she said she made the decision to pivot from using recycled gold to using only SMO gold from West Africa.

According to [Single Mine Origin](#), their gold is the first transparent and traceable gold that has full chain of custody and is fully audited. All jewelry made with SMO gold comes with a QR code that shows its journey from mine to market.

The company wants to assure consumers their gold was mined responsibly and is free of mercury, which is harmful to miners and the environment, as well as confirming that miners are paid fairly.

“I switched to SMO gold because of 100 percent traceability,” Cole said. “Also, the fact that it’s from a region I come from, and the benefits for the people within that region, the miners. The ethics of the company I found in line with my own values and that’s, for me, quite important.”



The [pieces Coel wore](#) at the gala contain a unique QR code that allows viewers to follow the gold from Mine to Met by witnessing the journey of the gold, from the mine, the miners, and the community and environmental projects they support, to meeting Emefa Cole in her studio and, finally, seeing Michaela Coel on the red carpet at the Met Gala.

“It was so beautiful for [Coel] to make that connection and to have such a conscious mind about where the jewelry comes from, the entire chain from mine to maker to wearer,” Cole said.

Following the Met, the pieces will become part of “Worth Their Weight,” a collection by the designer inspired by her partnership with Coel and released the day after the Met Gala.

“It was so beautiful for [Coel] to make that connection and to have such a conscious mind about where the jewelry comes from, the entire chain from mine to maker to wearer,” Cole said.

Following the Met, the pieces will become part of “Worth Their Weight,” a collection by the designer inspired by her partnership with Coel and released the day after the Met Gala.

Cole designed and made every piece in Worth Their Weight, except for Coel’s hairpiece. For that, she collaborated with 28-year-old jeweler Benjamin Hawkins, with whom she shares a space at [The Goldsmiths’ Centre](#), a creative community founded by The Goldsmiths’ Company. The piece has both their hallmarks on it.



The front and back view of the gold hairpiece Michaela Coel wore at the Met Gala on Monday. It boasts three hallmarks: Single Mine Origin, jewelry designer Emefa Cole, and Benjamin Hawkins, a jeweler who collaborated with the designer to make the piece. (Photo courtesy of Emefa Cole.)

“He’s already a master with his own apprentice, and that in itself is rare,” Cole said of Hawkins. “When I met Michaela, Ben was there with me, so she got a sense of the both of us because we were working together. He was incredibly supportive and sort of had the confidence to say, ‘We can do this.’”

The Worth Their Weight collection also includes two large cuffs, a bangle and a brooch. The collection’s name is a play on the sheer weight of traceable gold and the traditional Akan brass weights used by West African people as measuring tools, according to SMO’s website.

“I don’t just make a whole collection and push it all out there at once. It develops as time goes on,” Cole said. “I like to work in a very methodical and patient matter. I add to the pieces as time goes on, which why my ‘Erosion’ series and my ‘Vulcan’ series are continuing, because I have too much inspiration for these pieces. I can’t just do it and then just let it go.”

Cole was familiar with the designer's Vulcan series when she reached out about the Met Gala.

"She recently wore my jewelry [for a shoot](#), which was a collaboration between her, the British Film Institute, and BMW, and the pictures were so powerful," Cole said. "She looked absolutely amazing. She was wearing the '[Caldera](#)' [rings](#). That's how she became aware of my pieces."

The Vulcan series rings have opened other doors for Cole in her career, as they were acquired by both the [The Goldsmiths' Company's collection](#), and the [Victoria & Albert Museum \(V&A\)](#) in London.

Cole first moved to London when she was 12 with a fascination for jewelry, precious metals, stones and the geological process of the Earth, such as volcanoes, already instilled in her.

She graduated from London Metropolitan University's Cass School of Art, Media and Design with a bachelor's degree in Silversmithing and Jewelry in 2011.

She also has completed an apprenticeship with the personal Goldsmiths of the Asantehene (The King of the Ashanti) in Ghana, "facilitating a thorough exploration of the ancient lost-wax casting method, which the Ashanti have perfected," according to her website.

In November 2019, Cole was exhibiting her jewelry at a contemporary craft fair when V&A curator of jewelry Clare Phillips approached her and bought a custom oxidized silver ring with pyrite and gold leaf for her personal collection.

Phillips later emailed Cole saying the V&A wanted to acquire one of the rings for their permanent collection. In January 2020, the museum chose an "Untitled" ring, which resembles a Caldera ring but, Cole's website confirms, is not officially named.

# Met Gala 2023: The Best Dressed Celebrities On The Red Carpet

— *Let's see how the A-listers and their stylist's interpreted the 'Karl Lagerfeld: A Line of Beauty' theme, shall we?*



BY DAISY MURRAY 1 MAY 2023



46 OF 65

## Michaela Coel

The ELLE UK cover star glowed in custom-made Schiaparelli dress with Emefa Cole SMO Gold jewellery.

## *Michaela Coel wears ethical gold by Emefa Cole at the Met Gala*

For the prestigious 2023 fête, co-host Michaela Coel commissioned Ghanaian-British designer Emefa Cole to design a custom suite of jewellery in fully traceable single mine origin gold

By Ian Thorley

The four pieces, each crafted in fully traceable single-mine origin gold, come with a unique QR code which follows the metal's journey from mine to Met Gala. Indeed, upon closer inspection of Coel's pieces, a story forms, beginning with the two Ivorian women who run the mine, to Emefa's design studio and, finally, to Coel on the Met's red carpet stairs.



Michaela Coel wears Emefa Cole jewellery at the Met  
Gala 2023

“I was already working with West African gold responsibly sourced by SMO gold so it was a natural fit,” says Cole, who hand carves her pieces from wax before casting them. “This is a true celebration of both my and Michaela’s Ghanaian heritage.”



A ring by Emefa Cole created for the 2025 Met Gala



Michaela Coel's glittering Emefa Cole headpiece



The QR code that accompanies Emefa Cole's jewellery



Coordinating with Cole's shimmering suite was a one-off bejewelled gown by Schiaparelli's Daniel Roseberry. To elevate this look even further, Cole also created a unique headpiece which, due to time constraints, she pulled in her studio neighbour and jeweller Benjamin Hawkins to complete the design.

The final creation is based on a coral branch and crafted from blackened recycled silver, as well as tiny nuggets of SMO gold, which Coel paired with earrings and a set of cocktail rings.

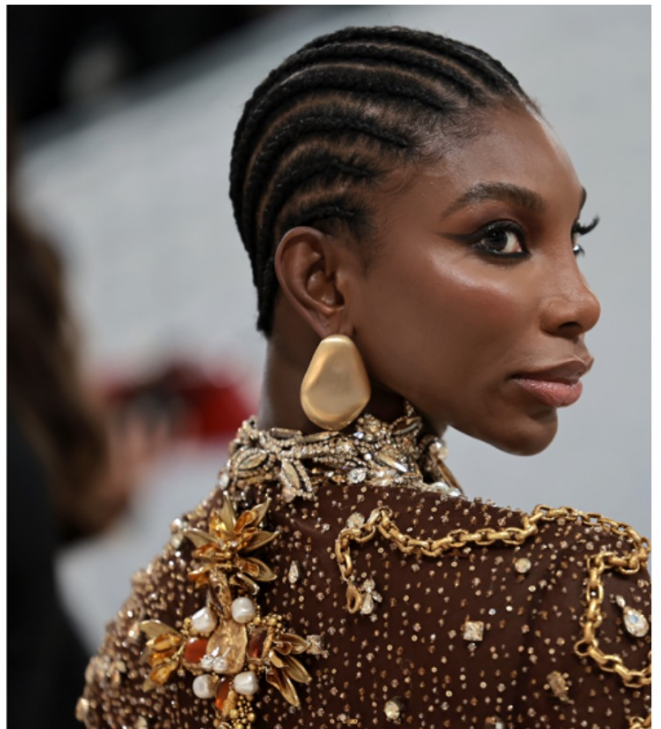
“There is a great synergy between Daniel Roseberry and Emefa Cole's designs, I feel timeless in her work,” said Coel, on her final Met Gala look. “There is no greater feeling to know that your choices can impact women in Africa like we've done with this collaboration.”

Cole's pieces will now become part of a brand-new collection, titled Worth Their Weight, which also includes cuffs, a bangle, a brooch and rings.

## The Best Red Carpet Jewelry From the 2023 Met Gala

Serious multi-million dollar jewels decked the red carpet at this year's Karl Lagerfeld-themed event.

### Michaela Coel in Emefa Cole x SMO Gold



Michaela Coel wowed in a form-fitting ornate golden-beaded custom Schiaparelli gown and with a dress like that, the jewelry must be very, very specific in order to stand out. Coel wisely chose to have custom jewelry created for the custom dress. Jeweler Emefa Cole designed her statement-making earrings, rings, and headpiece (not pictured) from Single Mine Origin Gold—responsibly sourced material traceable to mines with high responsibility standards. The gold in these particular pieces was sourced from Endeavour Mining's Ity mine in her native West Africa. Both Coel and Cole are British Ghanaian. The pieces were created based on Cole's collection of SMO gold pieces called Worth Its Weight.

Social



Annabel Davidson  
Instagram Story

annabel\_davidson\_yeah 5 h

emefacolejewellery

@georgmedley

Reply to annabel\_davidson\_yeah...

Heart icon

Share icon

The image shows an Instagram story with a dark background. At the top, there is a profile picture of a hand holding a ring, followed by the name 'annabel\_davidson\_yeah' and '5 h'. Below this is a video player showing a woman in profile with braided hair and large, ornate gold earrings. The video is attributed to 'emefacolejewellery' and features a tag for '@georgmedley'. At the bottom, there is a text input field for replies, a heart icon, and a share icon.



annabel\_davidson\_yeah 4 h



[@emefacolejewellery](#)

[@benjaminhawkinslondon](#)

[@smo.gold](#) [@georgmedley](#)

[@schiaparelli](#)



[@benjaminhawkinslondon](#)

Reply to  
annabel\_davidson\_yeah...



# Carol Wooton, Instagram Post



carolwoolton • Follow



carolwoolton • #MichaelaCoel arriving at @metgalaofficial last night dripping in #gold - not just any gold, working with #jewellery artist and fellow British Ghanaian, @emefacolejewellery she wanted to wear #jewels crafted in Single Mine Origin (SMO), gold responsibly sourced from West Africa. The collection, Worth their Weight worn by Michaela was granted its own QR code to take you from mine to Met Gala and witness the journey of the gold; the mine, the miners, the community and environmental projects, meet #Emefa in her studio and finally see Michaela coel wearing it on the red carpet.

Something new - something groundbreaking - To hear more listen to #IfJewelscouldtalk - the one where I talk with @betts\_metal\_sales about @smo.gold @themetgalaofficial2023

9 h



ambersoukjewellery Looking forward to listening



1 h Reply



ammabeketter Thank you Carol. It was a magical moment



124 likes

9 HOURS AGO



Add a comment...

Post

Carol Woolton,  
Instagram Story



# Francesca Fearon Instagram Post



fearonfrancesca · Follow



We talk a lot nowadays about sustainability and provenance in the jewellery world, so I am really impressed with Michaela Coel, one of the Met Gala co-hosts, for teaming up with British-Ghanaian jewellery artist Emeфа Cole to create the spectacular gold jewellery responsibly sourced from a single SMO gold mine to wear with her Schiaparelli gown. The groundbreaking collection Worth Their Weight in Gold worn by Michaela was issued with its own QR code showing the gold's journey from mine to the Met Gala red carpet along with all the sustainability and community projects surrounding the mine in Cote d'Ivoire. It would be great to see more projects like this being highlighted on the red carpet. Congratulations @michaelacoelweb @emefacolejewellery @smo.gold #metgala2023 #metgala @schiaparelli #cocktailrings #goldjewellery

Edited · 7 h



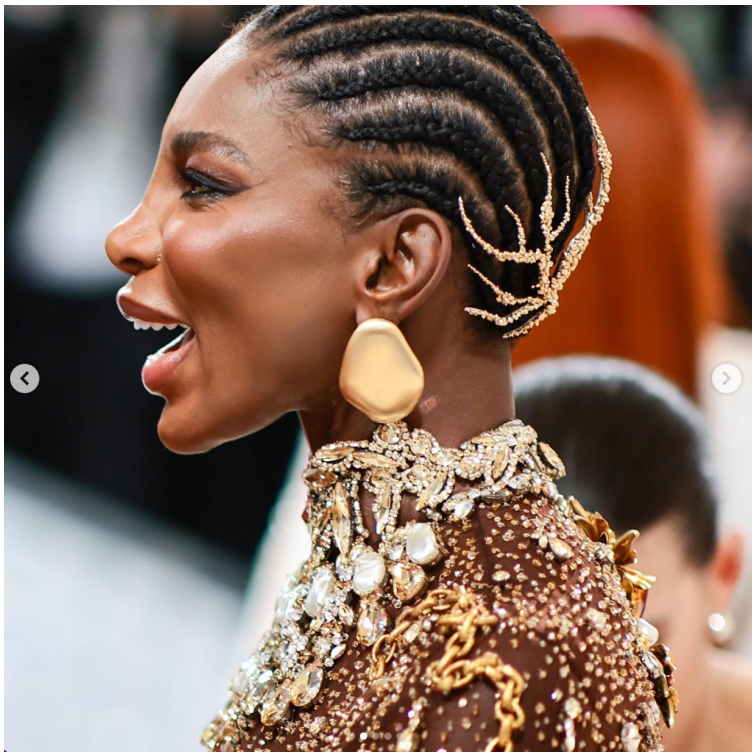
Liked by thediamondedit and 19 others

7 HOURS AGO



Add a comment...

Post



fearonfrancesca · Follow



We talk a lot nowadays about sustainability and provenance in the jewellery world, so I am really impressed with Michaela Coel, one of the Met Gala co-hosts, for teaming up with British-Ghanaian jewellery artist Emefa Cole to create the spectacular gold jewellery responsibly sourced from a single SMO gold mine to wear with her Schiaparelli gown. The groundbreaking collection Worth Their Weight in Gold worn by Michaela was issued with its own QR code showing the gold's journey from mine to the Met Gala red carpet along with all the sustainability and community projects surrounding the mine in Cote d'Ivoire. It would be great to see more projects like this being highlighted on the red carpet. Congratulations @michaelacoelweb @emefacolejewellery @smo.gold #metgala2023 #metgala @schiaparelli #cocktailrings #goldjewellery

Edited · 7 h



Liked by thediamondedit and 19 others

7 HOURS AGO



Add a comment...

Post



fearonfrancesca · Follow



We talk a lot nowadays about sustainability and provenance in the jewellery world, so I am really impressed with Michaela Coel, one of the Met Gala co-hosts, for teaming up with British-Ghanaian jewellery artist Emeфа Cole to create the spectacular gold jewellery responsibly sourced from a single SMO gold mine to wear with her Schiaparelli gown. The groundbreaking collection Worth Their Weight in Gold worn by Michaela was issued with its own QR code showing the gold's journey from mine to the Met Gala red carpet along with all the sustainability and community projects surrounding the mine in Cote d'Ivoire. It would be great to see more projects like this being highlighted on the red carpet. Congratulations @michaelacoelweb @emefacolejewellery @smo.gold #metgala2023 #metgala @schiaparelli #cocktailrings #goldjewellery

Edited · 7 h



Liked by **thediamondedit** and 19 others

7 HOURS AGO



Add a comment...

Post



fearonfrancesca · Follow



We talk a lot nowadays about sustainability and provenance in the jewellery world, so I am really impressed with Michaela Coel, one of the Met Gala co-hosts, for teaming up with British-Ghanaian jewellery artist Emefa Cole to create the spectacular gold jewellery responsibly sourced from a single SMO gold mine to wear with her Schiaparelli gown. The groundbreaking collection Worth Their Weight in Gold worn by Michaela was issued with its own QR code showing the gold's journey from mine to the Met Gala red carpet along with all the sustainability and community projects surrounding the mine in Cote d'Ivoire. It would be great to see more projects like this being highlighted on the red carpet. Congratulations @michaelacoelweb @emefacolejewellery @smo.gold #metgala2023 #metgala @schiaparelli #cocktailrings #goldjewellery

Edited · 7 h



Liked by thediamondedit and 19 others

7 HOURS AGO



Add a comment...

Post





fearonfrancesca · Follow



We talk a lot nowadays about sustainability and provenance in the jewellery world, so I am really impressed with Michaela Coel, one of the Met Gala co-hosts, for teaming up with British-Ghanaian jewellery artist Emeфа Cole to create the spectacular gold jewellery responsibly sourced from a single SMO gold mine to wear with her Schiaparelli gown. The groundbreaking collection Worth Their Weight in Gold worn by Michaela was issued with its own QR code showing the gold's journey from mine to the Met Gala red carpet along with all the sustainability and community projects surrounding the mine in Cote d'Ivoire. It would be great to see more projects like this being highlighted on the red carpet. Congratulations @michaelacoelweb @emefacolejewellery @smo.gold #metgala2023 #metgala @schiaparelli #cocktailrings #goldjewellery

Edited · 7 h



Liked by **thediamondedit** and 19 others

7 HOURS AGO



Add a comment...

Post

# Georgia Medley Instagram



**georgmedley**

Metropolitan Museum of Art



Co-chair #MichaelaCoel wearing custom @Schiaparelli by @DanielRoseberry. Earrings, Rings and HairPiece by @EmefaColeJewellery in @SMO.Gold for #MetGala : Karl Lagerfeld Line of Beauty. Dripping in Gold. 🍷 ✨

~ Styling by Me #GeorgiaMedley, Make Up by @BerniciaBoateng in collaboration with @PatMcGrathReal, Hair by @HairByAntoinetteNYC, Nails by @NaomiNailsNYC, Team @JoelRyanB

~ #MetGala #KarlLagerfeld #Schiaparelli #Gold #MetGala23

Edited · 3 h



**carlottaconstant** Yes!! Smashed it my babe xxxx

8 h Reply



**nonamenolampe** Look of the century. PERIODTTT!!!! 🔥

16 h Reply



**kenyahunt** So proud of you Georgia!!! 🙌🏻🍷🍷❤️👑



Liked by liv.ruiz and 2,619 others

17 HOURS AGO



Add a comment...

Post



**georgmedley**  
Metropolitan Museum of Art



Co-chair #MichaelaCoel wearing custom @Schiaparelli by @DanielRoseberry. Earrings, Rings and HairPiece by @EmefaColeJewellery in @SMO.Gold for #MetGala : Karl Lagerfeld Line of Beauty. Dripping in Gold. 🌟

~  
Styling by Me #GeorgiaMedley, Make Up by @BerniciaBoateng in collaboration with @PatMcGrathReal, Hair by @HairByAntoinetteNYC, Nails by @NaomiNailsNYC, Team @JoelRyanB

~  
#MetGala #KarlLagerfeld #Schiaparelli #Gold #MetGala23  
Edited · 3 h



**carlottaconstant** 🌟 Yes!! Smashed it my babe xxxx  
8 h Reply



**nonamenolampe** Look of the century. PERIODTTT!!!! 🌟  
16 h Reply



**kenyahunt** 🌟 So proud of you Georgia!!! 🍷🍷❤️🌟



Liked by liv.ruiz and 2,619 others  
17 HOURS AGO



Add a comment...

Post



**georgmedley**  
Metropolitan Museum of Art



georgmedley Co-chair #MichaelaCoel wearing custom @Schiaparelli by @DanielRoseberry. Earrings, Rings and HairPiece by @EmefaColeJewellery in @SMO.Gold for #MetGala : Karl Lagerfeld Line of Beauty. Dripping in Gold. 🌟

~  
Styling by Me #GeorgiaMedley, Make Up by @BerniciaBoateng in collaboration with @PatMcGrathReal, Hair by @HairByAntoinetteNYC, Nails by @NaomiNailsNYC, Team @JoelRyanB

~  
#MetGala #KarlLagerfeld #Schiaparelli #Gold #MetGala23  
Edited · 3 h



carlottaconstant 🌟 Yes!! Smashed it my babe xxxx



nonamenolampe Look of the century. PERIODTTT!!!! 🔥



kenyahunt 🌟 So proud of you Georgia!!! 🍷🍷❤️🌟



Liked by liv.ruiz and 2,619 others  
17 HOURS AGO

Add a comment...

Post



**georgmedley**  
Metropolitan Museum of Art



Co-chair #MichaelaCoel wearing custom @Schiaparelli by @DanielRoseberry. Earrings, Rings and HairPiece by @EmefaColeJewellery in @SMO.Gold for #MetGala : Karl Lagerfeld Line of Beauty. Dripping in Gold. 🌟

~  
Styling by Me #GeorgiaMedley, Make Up by @BerniciaBoateng in collaboration with @PatMcGrathReal, Hair by @HairByAntoinetteNYC, Nails by @NaomiNailsNYC, Team @JoelRyanB

~  
#MetGala #KarlLagerfeld #Schiaparelli #Gold #MetGala23  
Edited · 3 h



**carlottaconstant** 🌟 Yes!! Smashed it my babe xxxx  
8 h Reply



**nonamenolampe** Look of the century. PERIODTTT!!!! 🌟  
16 h Reply



**kenyahunt** 🌟 So proud of you Georgia!!! 🙌🏻👏🏻❤️🌟



Liked by liv.ruiz and 2,619 others  
17 HOURS AGO



Add a comment...

Post



**georgmedley**  
Metropolitan Museum of Art



Co-chair #MichaelaCoel wearing custom @Schiaparelli by @DanielRoseberry. Earrings, Rings and HairPiece by @EmefaColeJewellery in @SMO.Gold for #MetGala : Karl Lagerfeld Line of Beauty. Dripping in Gold. ✨

~  
Styling by Me #GeorgiaMedley, Make Up by @BerniciaBoateng in collaboration with @PatMcGrathReal, Hair by @HairByAntoinetteNYC, Nails by @NaomiNailsNYC, Team @JoelRyanB

~  
#MetGala #KarlLagerfeld #Schiaparelli #Gold #MetGala23  
Edited · 3 h



**carlottaconstant** Yes!! Smashed it my babe xxxx  
8 h Reply



**nonamenolampe** Look of the century. PERIODTTT!!!! 🔥  
16 h Reply



**kenyahunt** So proud of you Georgia!!! 🙌❤️✨



Liked by liv.ruiz and 2,619 others  
17 HOURS AGO

Add a comment...

Post

# Rachel Garrahan Instagram Post



rgarrahan



rgarrahan @britishvogue exclusive: how #metgala cohost #michaelacoel came to be dripping in ethical gold thanks to fellow British-Ghanaian @emefacolejewellery. The full story about @smo.gold making its way from West African mine to the Met up now. Link in profile. #metgala2023 #odetokarl #lineofbeauty

Edited · 2 h



kerrymcdermott  
2 h 1 like Reply



ripspeed\_876syndicate  
4 h 1 like Reply



lucytiffney @benjaminhawkinslondon  
4 h 1 like Reply



barinascatherine I thought the whole thing



Liked by emefacolejewellery and 219 others  
17 HOURS AGO



Add a comment...

Post

Rachel Garrahan  
Instagram Story



rgarrahan 17 h

#metgala  
@vogue  
@smo.gold

@me Fellow cohost #michaelacoel is a golden goddess in @emefacolejewellery and @Schiaparelli ✨ ✨ ✨

Reply to rgarrahan...





Sarah Royce Greensill  
Instagram story



srgjewel 18 h



[#michaelacoel](#) x  
[@emefacolejewellery](#)  
[@smo.gold](#) 🙌🙌🙌🙌🙌



[#metgalajewelry](#)

Reply to srgjewel...



Who What Wear  
Jewels Instagram Story



wwwjewels 17 h



emmabeckettpr

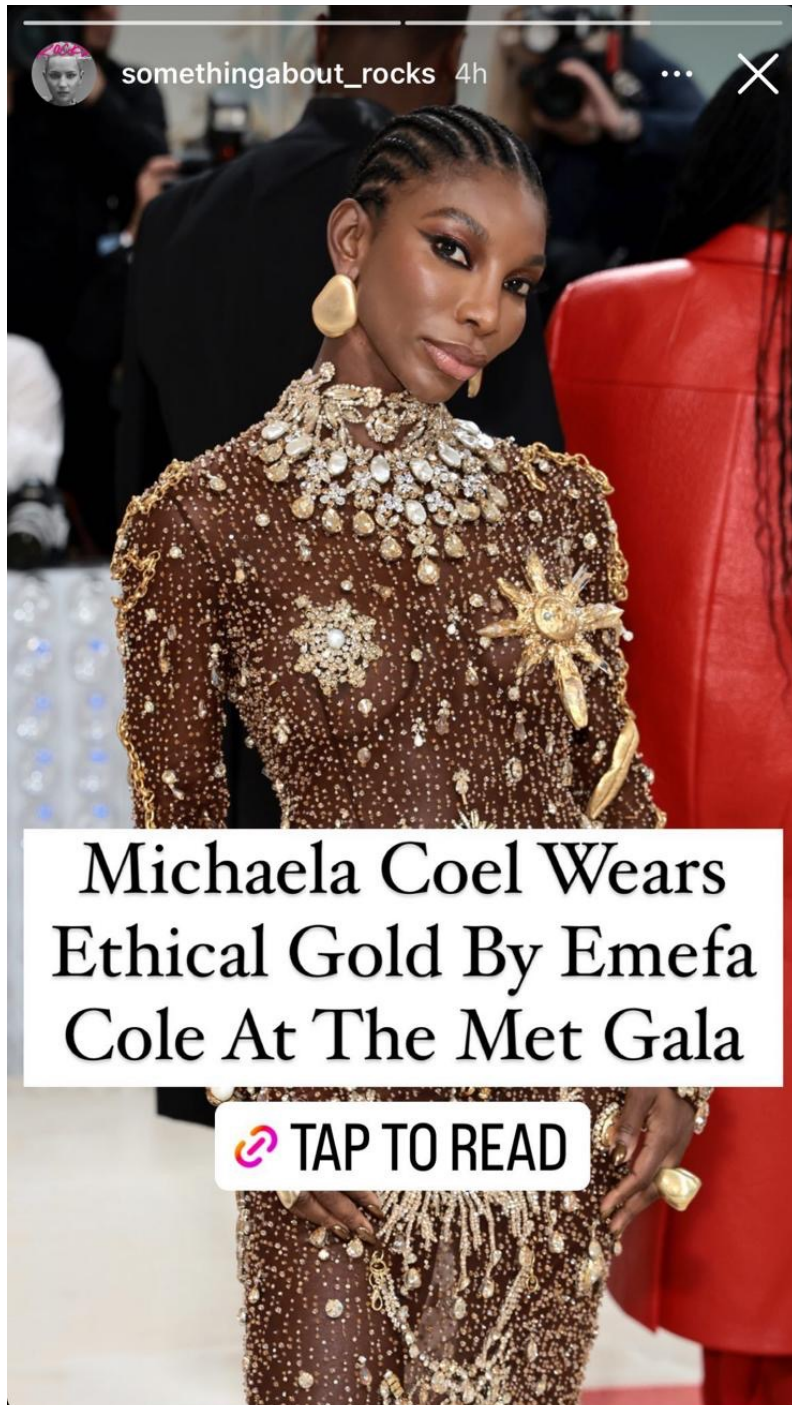


Met Gala Co-host [#MichaelaCoel](#)  
in [@emefacolejewellery](#) [@smo.gold](#)  
✨ [@georgmedley](#)

Reply to wwwjewels...



Something About Rocks  
Instagram Story



Michaela Coel Wears  
Ethical Gold By Emefa  
Cole At The Met Gala

 TAP TO READ

# Something About Rocks Instagram Post



somethingabout\_rocks · Follow



somethingabout\_rocks We're still not over #MichaelaCoel's Met Gala jewels - a custom suite by @emefacolejewellery in fully traceable single mine origin gold. Head to the link in bio for all the details.

1d



emefacolejewellery ❤️

18h Reply



jacquie\_jewels Beautiful

1d 1 like Reply



gemstone2014 ✨🌙✨

1d 1 like Reply ...



somethingabout\_rocks .

1d Reply



— View replies (1)



Liked by emefacolejewellery and others

1 DAY AGO



Add a comment...

Post

# Something About Rocks Instagram Post



somethingabout\_rocks · Follow



somethingabout\_rocks We're still not over #MichaelaCoel's Met Gala jewels - a custom suite by @emefacolejewellery in fully traceable single mine origin gold. Head to the link in bio for all the details.

1d



emefacolejewellery ❤️



18h Reply



jacquie\_jewels Beautiful



1d 1 like Reply



gemstone2014 ✨🌙✨



1d 1 like Reply



somethingabout\_rocks .



1d Reply

— View replies (1)



Liked by emefacolejewellery and others

1 DAY AGO



Add a comment...

Post

# Check The Tag Instagram Post



checkthetag • Follow



**checkthetag** Who: Michaela Coel  
Wearing: custom Schiaparelli & custom Emefa Cole SMO Gold  
Where: 2023 Met Gala  
Styled by: @georgmedley  
Edited · 3 d



**maison.versace** too much information? yes  
do i like it? yes  
3 d 32 likes Reply



**aalicers** With sooo many white basic dresses SHE ATE  
3 d 33 likes Reply



**\_sirmichaelking** A moment.  
3 d 8 likes Reply



**3,099 likes**  
3 DAYS AGO



Add a comment...

Post